

WHY CAD/CAM ABUTMENTS* BY STRAUMANN?

Unequaled Precision

Designed to scan within 10 microns of accuracy, Straumann's etkon es1 laser scanner produces a 3-D digital image mapping (28,000 precise points per second) to create a precise fit and ideal custom abutment. In conjunction with the latest 5D high speed milling machines, weighing 8 tons, they are virtually vibration free. The balance is so precise that the position deviation is less than 0.001 mm.

Advantages of custom CAD/CAM over stock abutments

Custom CAD/CAM abutments are virtually designed and custom milled to lab specifications precisely for each individual case allowing for more anatomically ideal abutment design, better emergence profile for improved soft tissue manipulation and support, better margin placement, maintaining proper biological width, optimizing the gingival smile line, smaller secondary castings (which means less alloy charges), angulation corrections up to 30° and overall superior esthetics.

Higher Profitability Through a Variety of Custom Materials

Individualized zirconia dioxide or titanium materials for custom abutments allow you to use a strong, biocompatible material for outstanding esthetic results avoiding the financial cost of stocking multiple abutments and components, as well as reducing excessive inventory.

GENUINELY STRAUMANN

When you buy authentic Straumann devices, you receive more than the quality, integrity, and reputation of a great company. You get a level of support from your Straumann Territory Manager that is unmatched in the industry. From product training to business planning and development we're with you while you gain the confidence to succeed.



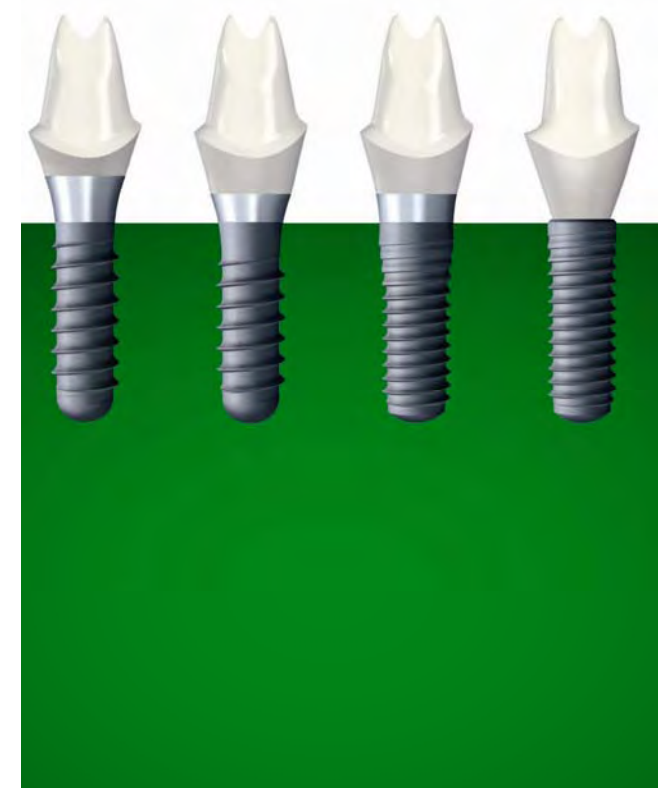
For more information on
Straumann's CAD/CAM custom
abutments and services please call
Molina/Watson Dental Technologies
Inc. at (866) 994-3832



etkon
CAD/CAM BY STRAUMANN

SIMPLY COMPLETE

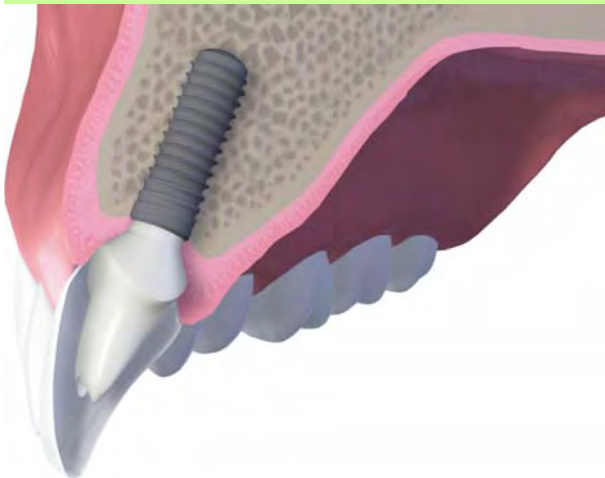
Tissue Level and Bone Level
CAD/CAM Custom Abutments



CADCAM by straumann. Success included.

STRAUMANN'S REPUTATION GROWS WITH ETKON

Straumann®'s reputation for quality and precise implant technology continues to define the industry standard. From our strong legacy in tissue level implants and simplified restorations to the pleasing esthetics of our new bone level implant line, customer expectations of Straumann remain high.



With etkon CAD/CAM by Straumann™, we now deliver custom abutments in either zirconia or titanium when a standard abutment won't achieve the desired results. Our entry into CAD/CAM presents a more complete portfolio of solutions and provides greater options for the dental laboratory to provide to surgical and restorative specialists.

Additions to the Tissue Level

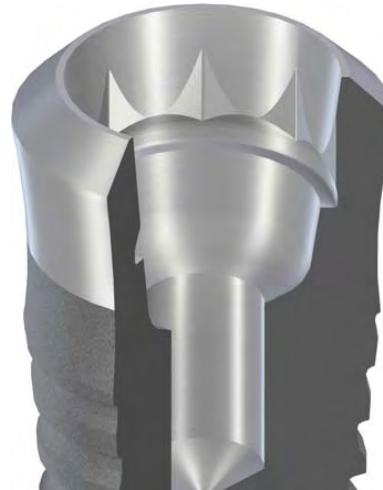
Tissue Level Options

Titanium Abutment

Zirconia Abutment



Tissue Level Connection



Additions to the Bone Level Implant

Bone Level Options

Titanium Abutment

Zirconia Abutment



Bone Level Connection

